

Urologist



Dr Jo Schoeman
Specialist Urologist

PATIENT INFORMATION BROCHURE

EXTRA- CORPOREAL SHOCK WAVE LITHOTRIPSY (ESWL)

See this live on:
vidscrip.com/urojo

Patient well-being is my first priority!

Jo Schoeman
FRACS, FCS (Urol) SA, MBChB

The Wesley Hospital
Suite 46 Level 4
The Wesley Medical Centre
24 Chasely Street
AUCHENFLOWER QLD 4066

Ph: 07)3371-7288
Fax: 07) 3870-5350
E-mail: jo@urojo.com.au
Emerg: 0403 044 072

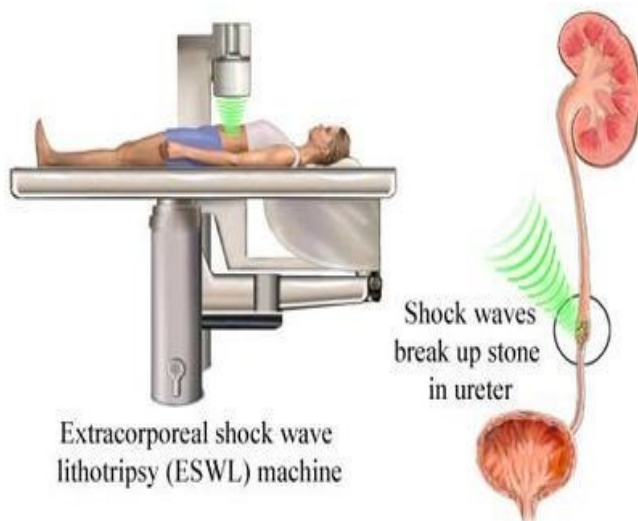
www.drjoschoeman.com.au

Extra-corporeal Shock Wave Lithotripsy (ESWL)

Non-invasive technique of shattering renal or ureteric calculi using sound waves.

Why is it done?

- Renal stones of any size, usually larger than 1cm obstructing/ non-obstructing the renal pelvis or ureter
- Conservative form of treatment with external treatment administered through the skin with electromagnetic/ pyzo-electric shock waves
- Shock waves compress and distract the stone and the stone crystal fragments at its weakest links
- Non-invasive
- 70% of patients are stone free after this procedure, depending on the size of the stone and consistency of the stone
- You may present with colicky pain on the affected side when stone fragments make their way down the ureter

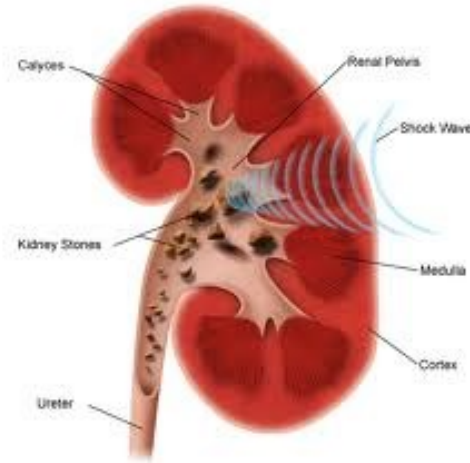


Extracorporeal shock wave lithotripsy (ESWL) machine

What to be aware of:

- Colicky pain that persists
- Infection and fever

Contact the rooms or your nearest Emergency Department ASAP



How is it done?

- Patients will receive a general anaesthesia.
- Prophylactic antibiotics is given.
- The correct kidney is identified and marked while you are awake
- You are placed on a specifically designed table where a compartment in the bed underlying the affected kidney is removed to enable a large fluid containing probe to press up against your back
- With radiological imaging the shock waves are aimed onto the stone in 2 90 degree angles
- The stone is then bombarded with the shock waves. A total of approx. 4000 shots are administered until the stone fragments and disappears.

What next?

- As soon as you are awake and have kept some food down and emptied your bladder, you may leave for home.
- You may experience blood in your urine.
- You may experience colicky/crampy pains as you pass the fragments
- Allow for a few days for stabilization of symptoms.
- A ward prescription may be issued on your discharge, for your own collection at any pharmacy
- A follow-up appointment will be scheduled for 3 months. If any stones are caught and sent for evaluation, stone analysis results will be discussed at this consultation in order to formulate a plan to prevent recurrences
- Don't hesitate to ask Jo if you have any queries
- **DON'T SUFFER IN SILENCE, OR YOU WILL SUFFER ALONE!**

